

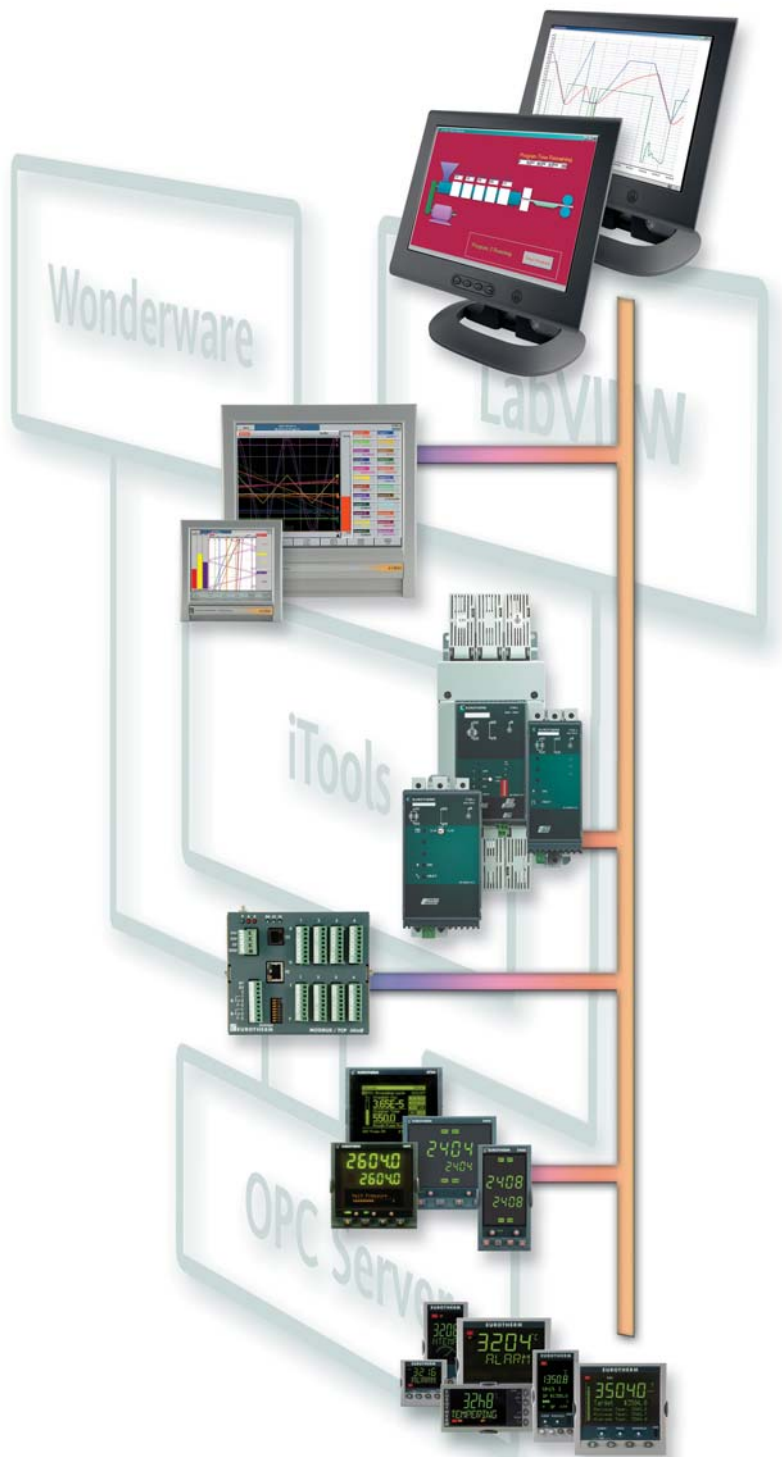


invensys®  
EUROTHERM®

EUROTHERM FLEXIBLE SOLUTIONS

# iTools

SOFTWARE TOOLS...



*...a versatile suite of software*

# iTools

## Configuration, Data Logging, Communications and Monitoring Software

- Configuration with Wizards to help the user
- Graphical wiring editor
- Cloning
- Terminal wiring visualisation
- Data logging and trending
- Setpoint program editor
- Process monitoring
- OPC Server
- Remote connection

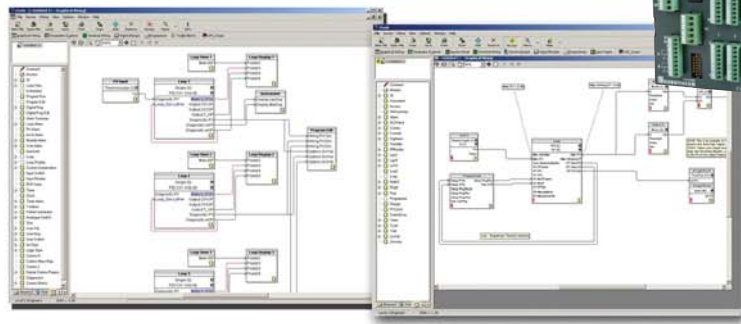


iTools is a versatile suite of software tools to allow configuration and monitoring of all Eurotherm® 2000 and 3000 Series Controllers and the T630 Process Controller. It also provides runtime monitoring of the 6000 Series graphical recording and data management units. It is capable of editing, storing and 'cloning' complete controller configurations as well as setting up data logging, process monitoring and Ethernet and modem connections.

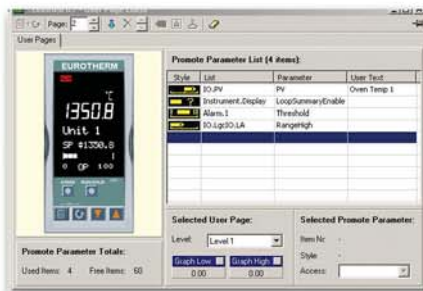
### GRAPHICAL WIRING EDITOR

- Simple 'Drag & Drop' wiring
- Pre-configured function blocks
- Access to real time monitoring

Configuring Eurotherm controllers has never been easier with the Graphical Wiring Editor within iTools. This intuitive tool allows the user to configure 3500, Mini8® Controller, 2604 and 2704 controllers, using a simple drag and drop graphical interface. By using pre-configured function blocks within the Graphical Wiring Editor, the user can develop advanced control applications in minutes.



### USER PAGES

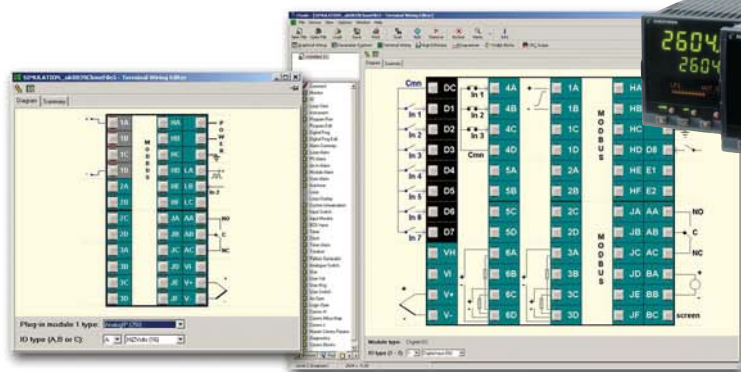


The User Page Editor is used to set up custom controller displays. Various display styles are supported, including bargraph, numerical and custom messages. It shows a scrollable sequence of parameter values in a variety of display styles.



### TERMINAL WIRING

Terminal Wiring allows the user to view the rear terminal panel of the selected device, and to determine the hardware setup. When online this view automatically updates to reflect the current instrument configuration. When developing a configuration offline, this view allows the user to define the requires device I/O.



## VIEW BUILDER/RUNNER

- Customised screens
- Import background images
- User buttons to switch between screens
- Live data monitoring
- Operator interface to controls

View Builder allows users to create PC based customised screens for simple process monitoring, commissioning and diagnostics to suit their process needs.

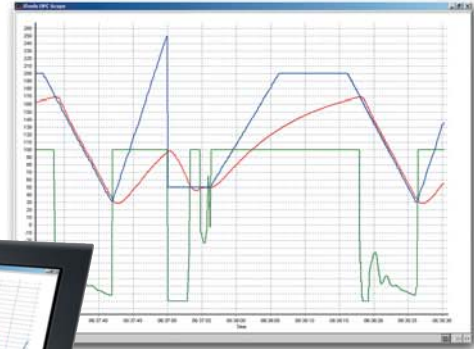
Once a View Builder screen has been created, the View Runner shows live values from the process with interactive buttons as an intuitive operator interface.



## OPC SCOPE

OPC Scope is a separate utility that allows trending, data logging and Dynamic Data Exchange (DDE). It is an OPC explorer program that can connect to any OPC server that is in the Windows registry.

Both data logging and trending are available and the user can trend and view live data, with a scaleable time axis between 1 minute and 1 month. This utility also offers a Historical Review mode and data can be logged onto the PC hard disk, from which it may be retrieved and analysed in an Excel spreadsheet.



## DEVICE PANEL

Clicking on this Views Toolbar item causes a front panel faceplate of the selected device to appear in the main iTools frame. For many instruments types, any digital displays and/or push buttons etc. which 'appear' on the device itself, are mimicked on this Device Panel View, allowing the device to be 'operated' via iTools (instead of at the panel) if desired.



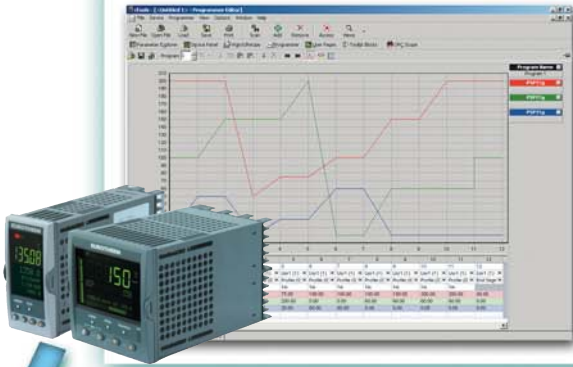
## FLASH MEMORY EDITOR

Msg	Parameter	Mask	Op	Value	Priority	Message
1	STATUS.InstrStatus	Mask	32	Low		INPUT SENSOR BROKEN
2	STATUS.InstrStatus	Mask	64	Low		CONTROL LOOP BROKEN
3	STATUS.InstrStatus	Mask	1	Low		ALARM 1 #1
4	STATUS.InstrStatus	Mask	2	Low		ALARM 2 #2
5	STATUS.InstrStatus	Mask	4	Low		ALARM 3 #3
6	STATUS.InstrStatus	Mask	8	Low		ALARM 4 #4
7	STATUS.InstrStatus	Mask	128	Low		LOW LOAD CURRENT
8	STATUS.InstrStatus	Mask	256	Low		OUTPUT SHORT CIRCUIT
9	STATUS.InstrStatus	Mask	2048	Low		HIGH LOAD CURRENT
10	TIMER.Status	=	1	Low		TIMER RUNNING
11	TIMER.Status	=	2	Low		TIMER HOLD
12	TIMER.Status	=	3	Low		TIMER END

The Flash Memory Editor allows the editing of five tabbed lists. These are used for user messages and recipes.



## PROGRAMMING



- Simple setup of setpoint profiles
- Store, retrieve and download program files
- Unlimited program storage
- Online and offline editing

The Setpoint Program Editor within iTools provides a simple method of configuring setpoint profiles and programmable event outputs. Programs can be edited live - online with the controller, or offline - for download after editing or storage of the profile. Storage of profiles is limited only by the amount of disk space available on the PC.

## WIZARDS

Configuration wizards are provided to simplify the configuration of a number of Eurotherm controllers. The user is provided with a number of pages giving a step by step configuration process with interactive help and graphical demonstrations of the different options. Tools can be provided to allow advanced users and OEMs to create their own wizards.



The wizards can either run stand-alone or within iTools and will be automatically offered when the instrument is first loaded into iTools.



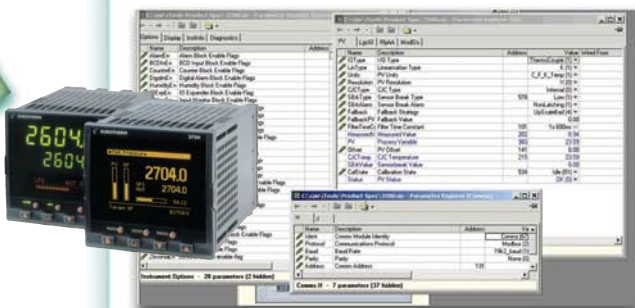
## DEVICE AND WATCH RECIPE EDITOR

The Device Recipe Editor is used to configure a recipe parameter list to be stored and used within the controller.



The watch window allows the user to monitor defined parameters from different browse lists.

## PARAMETER EXPLORER



The parameter explorer window shows the parameters associated with the current iTools browse list. This list is continuously synchronised with the user's browsing activity in the iTools browse panel tree.

# iTools Engineering Studio

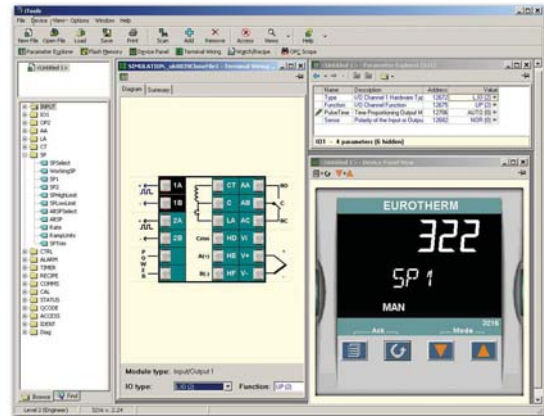
Versatile suite of software tools designed to simplify the configuration and visualisation of Eurotherms range of controllers and data management

Editors include

- GRAPHICAL WIRING**
- TERMINAL WIRING**
- USER PAGES**
- PROGRAMMER**
- PARAMETER EXPLORER**
- DEVICE RECIPE EDITOR**
- CONFIGURATION WIZARDS**
- CLONE FUNCTIONALITY**

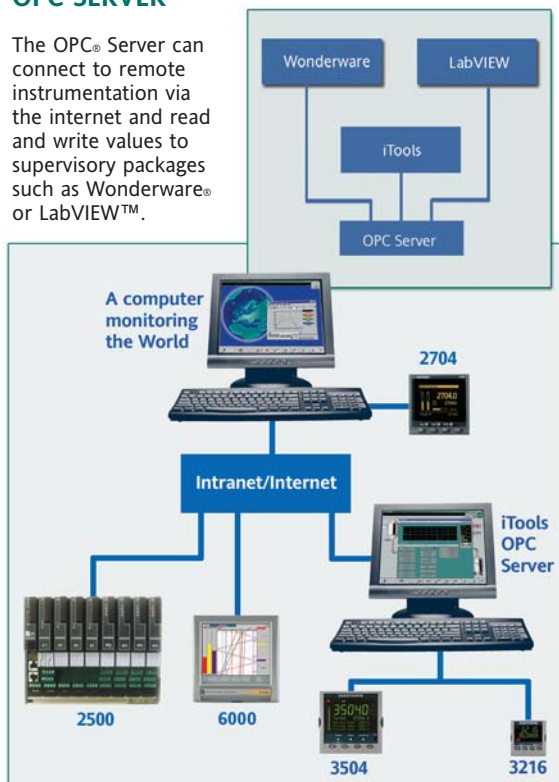
visualisation using Eurotherms embedded OPC server includes

- DEVICE PANELS**
- OPSCOPE OPC CLIENT**
- VIEW RUNNER**
- WATCH RECIPE WINDOW**
- REMOTE CONNECTION**



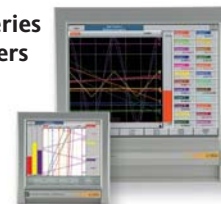
## OPC SERVER

The OPC<sup>®</sup> Server can connect to remote instrumentation via the internet and read and write values to supervisory packages such as Wonderware<sup>®</sup> or LabVIEW<sup>™</sup>.



- OPC Data Access 2 server
- Supports
  - Modbus TCP
  - Modbus RTU over serial including modem
  - Remote access
    - OPC using Microsoft<sup>®</sup> DCOM
    - Modbus TCP (including through Firewalls)
- Modbus TCP to Modbus serial gateway
  - Remote PC access internet/intranet to iTools OPC server
- Automatic network scanning and device detection
- Can integrate any Modbus RTU communicating device
- Includes advanced communication diagnostic and monitoring tools

## 6000 Series Recorders



## 7000 Series Thyristors



## Mini8<sup>®</sup> Controller



## 2000 Series Controllers



## 3000 Series Controllers



# Order Code



## Basic Product

<b>iTools</b>	Software tools
---------------	----------------

## 1 iTools

<b>CD</b>	Supplied on CD
<b>XXXXXX</b>	None standard

## 2 Configuration Kit

<b>NONE</b>	None (CD only)
<b>3000CK</b>	3000 Series (with clip and cable)
<b>3000CC</b>	3000 Series clip only with cable (no PSU)
<b>3500IR</b>	3500 Series infra red port (UK power connector)
<b>2000UK</b>	2000 Series (UK power connector)
<b>2000EU</b>	2000 Series (European power connector)
<b>2000US</b>	2000 Series (USA power connector)
<b>2500NC</b>	2500 Series (no power connector)
<b>2500UK</b>	2500 Series (UK power connector)

## 3 Configuration Software

<b>STD</b>	Enabled (includes integrated Setpoint Programmer Editor)
<b>NOCONF</b>	Disabled
<b>LMTD</b>	Limited – no config access to instrument

## 4 OPC Server

<b>STD</b>	Standard
<b>OPC</b>	Open OPC Server for use with 3rd party software (e.g. Wonderware)

## 5 Trending & Logging (OPC scope)

<b>XXX</b>	None
<b>TREND</b>	Trend displays enabled (OPC Scope)

## 6 View Builder

<b>XXX</b>	None
<b>VIEW</b>	View Builder enabled

## 7 Standalone Setpoint Programming Editor

<b>XXX</b>	None
<b>SPE</b>	Standalone setpoint programmer editor

# Eurotherm: International sales and service

Understanding and providing local support is a key part of Eurotherm's business. Complementing worldwide Eurotherm offices are a whole range of partners and a comprehensive technical support team... a soothing melody to ensure you get a service you will want to go back to.

**AUSTRALIA** Sydney  
Eurotherm Pty. Ltd.  
T (+61 2) 9838 0099  
F (+61 2) 9838 9288  
E [info.au@eurotherm.com](mailto:info.au@eurotherm.com)

**AUSTRIA** Vienna  
Eurotherm GmbH  
T (+43 1) 7987601  
F (+43 1) 7987605  
E [info.at@eurotherm.com](mailto:info.at@eurotherm.com)

**BELGIUM & LUXEMBOURG** Moha  
Eurotherm S.A./N.V.  
T (+32) 85 274080  
F (+32) 85 274081  
E [info.be@eurotherm.com](mailto:info.be@eurotherm.com)

**BRAZIL** Campinas-SP  
Eurotherm Ltda.  
T (+5519) 3707 5333  
F (+5519) 3707 5345  
E [info.br@eurotherm.com](mailto:info.br@eurotherm.com)

**DENMARK** Copenhagen  
Eurotherm Danmark AS  
T (+45 70) 234670  
F (+45 70) 234660  
E [info.dk@eurotherm.com](mailto:info.dk@eurotherm.com)

**FINLAND** Abo  
Eurotherm Finland  
T (+358) 22506030  
F (+358) 22503201  
E [info.fi@eurotherm.com](mailto:info.fi@eurotherm.com)

**FRANCE** Lyon  
Eurotherm Automation SA  
T (+33 478) 664500  
F (+33 478) 352490  
E [info.fr@eurotherm.com](mailto:info.fr@eurotherm.com)

**GERMANY** Limburg  
Eurotherm Deutschland GmbH  
T (+49 6431) 2980  
F (+49 6431) 298119  
E [info.de@eurotherm.com](mailto:info.de@eurotherm.com)

**HONG KONG & CHINA**  
Eurotherm Limited North Point  
T (+85 2) 28733826  
F (+85 2) 28700148  
E [info.hk@eurotherm.com](mailto:info.hk@eurotherm.com)

**Guangzhou Office**  
T (+86 20) 8755 5099  
F (+86 20) 8755 5831  
E [info.cn@eurotherm.com](mailto:info.cn@eurotherm.com)

**Beijing Office**  
T (+86 10) 6567 8506  
F (+86 10) 6567 8509  
E [info.cn@eurotherm.com](mailto:info.cn@eurotherm.com)

**Shanghai Office**  
T (+86 21) 6145 1188  
F (+86 21) 6145 1187  
E [info.cn@eurotherm.com](mailto:info.cn@eurotherm.com)

**INDIA** Chennai  
Eurotherm India Limited  
T (+91 44) 24961129  
F (+91 44) 24961831  
E [info.in@eurotherm.com](mailto:info.in@eurotherm.com)

**IRELAND** Dublin  
Eurotherm Ireland Limited  
T (+353 1) 4691800  
F (+353 1) 4691300  
E [info.ie@eurotherm.com](mailto:info.ie@eurotherm.com)

**ITALY** Como  
Eurotherm S.r.l.  
T (+39 31) 975111  
F (+39 31) 977512  
E [info.it@eurotherm.com](mailto:info.it@eurotherm.com)

**KOREA** Seoul  
Eurotherm Korea Limited  
T (+82 31) 2738507  
F (+82 31) 2738508  
E [info.kr@eurotherm.com](mailto:info.kr@eurotherm.com)

**NETHERLANDS** Alphen a/d Rijn  
Eurotherm B.V.  
T (+31 172) 411752  
F (+31 172) 417260  
E [info.nl@eurotherm.com](mailto:info.nl@eurotherm.com)

**NORWAY** Oslo  
Eurotherm A/S  
T (+47 67) 592170  
F (+47 67) 118301  
E [info.no@eurotherm.com](mailto:info.no@eurotherm.com)

**POLAND** Katowice  
Invensys Eurotherm Sp z o.o.  
T (+48 32) 2185100  
F (+48 32) 2177171  
E [info.pl@eurotherm.com](mailto:info.pl@eurotherm.com)

**SPAIN** Madrid  
Eurotherm España SA  
T (+34 91) 6616001  
F (+34 91) 6619093  
E [info.es@eurotherm.com](mailto:info.es@eurotherm.com)

**SWEDEN** Malmo  
Eurotherm AB  
T (+46 40) 384500  
F (+46 40) 384545  
E [info.se@eurotherm.com](mailto:info.se@eurotherm.com)

**SWITZERLAND** Wollerau  
Eurotherm Produkte (Schweiz) AG  
T (+41 44) 7871040  
F (+41 44) 7871044  
E [info.ch@eurotherm.com](mailto:info.ch@eurotherm.com)

**UNITED KINGDOM** Worthing  
Eurotherm Limited  
T (+44 1903) 268500  
F (+44 1903) 265982  
E [info.uk@eurotherm.com](mailto:info.uk@eurotherm.com)  
[www.eurotherm.co.uk](http://www.eurotherm.co.uk)

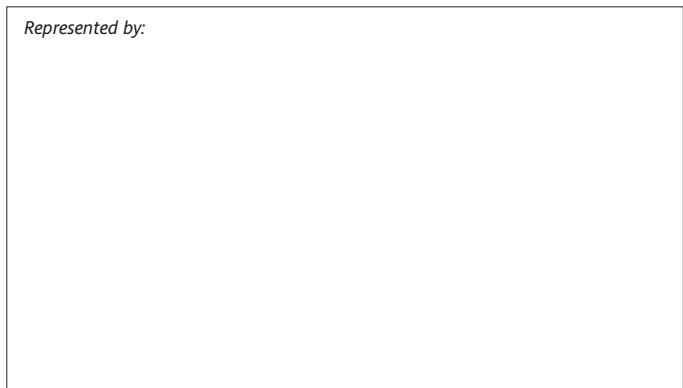
**U.S.A.** Leesburg VA  
Eurotherm Inc.  
T (+1 703) 443 0000  
F (+1 703) 669 1300  
E [info.us@eurotherm.com](mailto:info.us@eurotherm.com)  
[www.eurotherm.com](http://www.eurotherm.com)

Eurotherm is also represented in the following countries:

- |                        |                       |
|------------------------|-----------------------|
| Algeria                | Malaysia              |
| Azerbaijan             | Mali                  |
| Bahrain                | Mexico                |
| Bangladesh             | New Zealand           |
| Benin                  | Niger                 |
| Bosnia and Herzegovina | Nigeria               |
| Bulgaria               | Oman                  |
| Burkina Faso           | Pakistan              |
| Cameroon               | Philippines           |
| Canada                 | Puerto Rico           |
| Czech Republic         | Qatar                 |
| Egypt                  | Romania               |
| Georgia                | Russia                |
| Greece                 | Saudi Arabia          |
| Guinea-Conakry         | Serbia and Montenegro |
| Hungary                | Singapore             |
| Indonesia              | Slovak Republic       |
| Iran                   | Slovenia              |
| Iraq                   | South Africa          |
| Israel                 | Sri Lanka             |
| Ivory Coast            | Thailand              |
| Japan                  | Togo                  |
| Jordan                 | Tunisia               |
| Kazakhstan             | Turkey                |
| Kenya                  | Turkmenistan          |
| Kuwait                 | UAE                   |
| Latvia                 | Ukraine               |
| Lithuania              | Uzbekistan            |

ED53

Represented by:



© Copyright Eurotherm Limited 2007

Invensys, Eurotherm, the Eurotherm logo, Chessell, EurothermSuite, Mini8, Eycan, Eyris and Wonderware are trademarks of Invensys plc, its subsidiaries and affiliates. All other brands may be trademarks of their respective owners.

All rights are strictly reserved. No part of this document may be reproduced, modified, or transmitted in any form by any means, nor may it be stored in a retrieval system other than for the purpose to act as an aid in operating the equipment to which the document relates, without the prior written permission of Eurotherm limited.

Eurotherm Limited pursues a policy of continuous development and product improvement. The specifications in this document may therefore be changed without notice. The information in this document is given in good faith, but is intended for guidance only.

Eurotherm Limited will accept no responsibility for any losses arising from errors in this document.

